



Sweeper Collector 2023



About Us

In 1996 four brothers launched Eastern Attachments with a single goal in mind - To produce class leading agricultural and construction attachments. Form and function were to be equally addressed, build quality was not to be compromised and our products had to offer the best value for money.

We soon discovered that if these high standards were to be achieved we would need to develop new production techniques, use advanced materials and have innovation central to the whole process from design to production.

Whilst it's been hard work, the result is a company which has grown to become one of the UK's largest attachment manufacturers, boasting a purpose built production facility which utilises some of the worlds most advanced technologies. However, our greatest satisfaction comes from producing attachments in which we can take pride.

Eastern Attachments Limited
Maurice Gaymer Road
Attleborough
Norfolk
NR17 2QZ
United Kingdom

Tel: +44 (0) 1953 450350
Fax: +44 (0) 1953 450351

Web: www.easternattachments.co.uk
Email: sales@easternattachments.co.uk



Contents

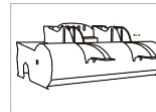
Page 4 Sweeper Collector



Page 5 Operator Instructions



Page 6 Spares



Page 7 Information



Sweeper Collector

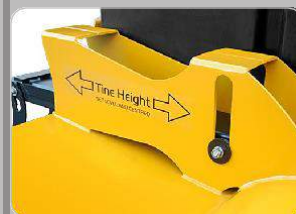


FEATURES

- Compact Design offers Exceptional Control, Visibility & Strength
- Manufactured from High Strength Steel
- Fully Floating Tine Pockets with Unique Quick Lock
- Large Heavy Duty Castors
- Gravity Feed Dust Suppression Water System
- Enclosed Hydraulics with Easy Access for Maintenance
- Auto Operation of Broom & Collector on Single Set of Hydraulic Services
- Quick Release Bristle Cartridge

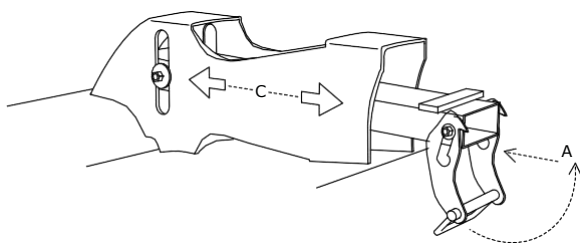
TECHNICAL INFORMATION

- Sweeping Width 2.20m (7'3")
- 22 x 5" Double Bonded Polypropylene Bristles
- Width 2.40m (7'10")
- Depth 2.00m (6'7")
- Height 1.05m (3'6")
- Weight 695kg
- Collector Volume 400 ltrs
- Water Tank 200 ltrs
- Hydraulic Flow Range 20 - 100 ltrs
- Max. Hydraulic Pressure 250 bar

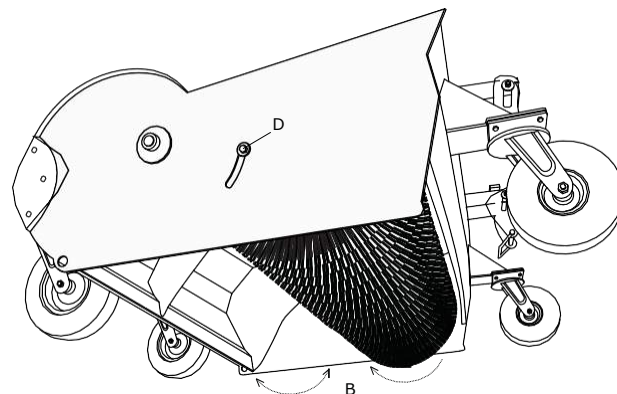


Operator Instructions

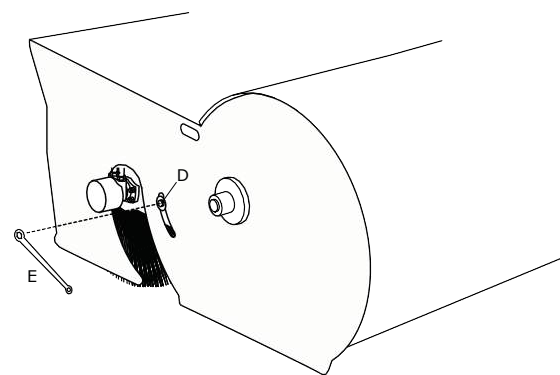
1



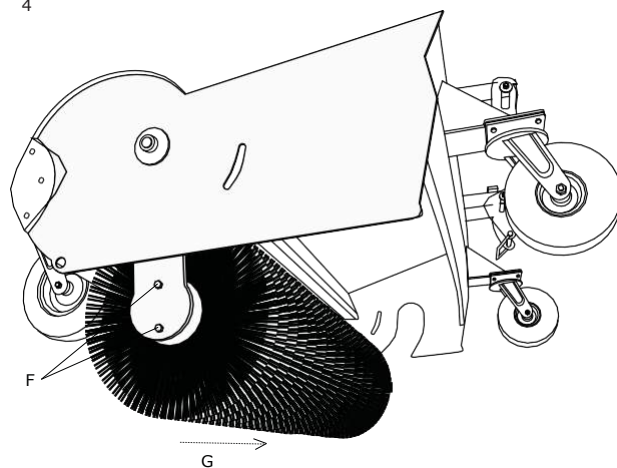
2



3



4



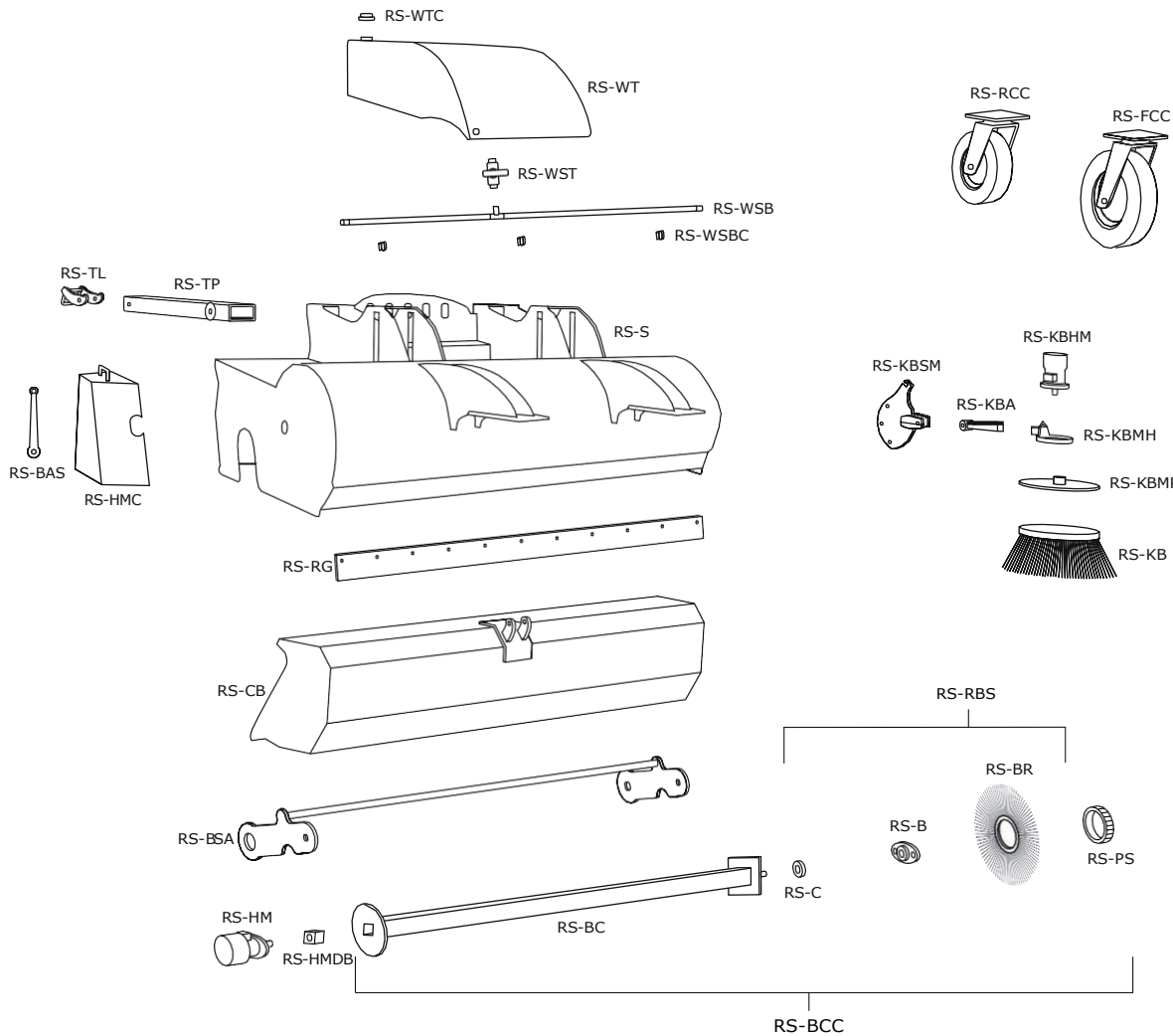
OPERATING INSTRUCTIONS

1. Place the fork tines in the sleeves and lift both heel locks into place, marked 'A' in diagram 1.
2. Connect the hydraulic couplings to the auxiliary services.
3. Raise the sweeper until you can see the collector bucket underneath and use the control for the auxiliary services to test the operational direction, 'B' in diagram 2. One way will open the collector, the other will close the collector then start the sweeper.
4. Close the collector and carefully lower the sweeper to the ground.
5. Set the tine sleeves so they are level and centred in line with the tine height arrows 'C' in diagram 1. This will allow float.
6. When sweeping do not exceed 5 mph or use high engine revs. Avoid potholes, raised drain covers and sweeping over bands, wire, ropes, etc.
7. When you have finished sweeping release the hydraulic pressure before decoupling.

MAINTENANCE

1. Check that the bolts are tight and grease the bristle shaft bearing regularly.
2. As bristles wear it will be necessary to adjust the bristle height. To do this, place the sweeper on level ground. Loosen the height adjustment bolts on both sides, marked 'D' in diagrams 2 & 3. Ensure the brush only lightly touches the ground. Tighten both the height adjustment bolts. (The spanner 'E' is inside the motor cover).
3. To replace the bristles, open the collector bucket and place the sweeper on the ground. Remove the height adjustment bolts from both sides, marked 'D' in diagrams 2 & 3. Slowly raise the sweeper until the bristle cartridge has swung down, as shown in diagram 4. Remove the bolts marked 'F' and swing the bristle cartridge out 'G', as shown in diagram 4. Remove the bearing and collar. Slide off the end plate, bristle segments and spacers. Starting with a bristle reload the bristle cartridge, alternating bristle segments and spacers (ensure that they are tightly packed - bristle segments can be damaged if they are not 'clamped' into place). Replace the end plate, collar and bearing. Locate the bristle cartridge onto the hydraulic motor block and swing back into place. Replace the bolts marked 'F' in diagram 4. Lower the sweeper whilst slowly going forward (this will allow the bristle cartridge to swing back into place). Finally, replace the height adjustment bolts on both sides and set the bristle height, 'Maintenance', Section 2.

Spares



Part No.	Description
Rs-RBS	Replacement Bristle Set
Rs-BR	Bristle Segment
Rs-PS	Plastic Spacer
Rs-BC	Bristle Cartridge
Rs-C	Collar
Rs-B	Bearing
Rs-BCC	Bristle Cartridge Complete
Rs-FCC	Front Castor Complete
Rs-RCC	Rear Castor Complete
Rs-WT	Water Tank
Rs-WTC	Water Tank Cap
Rs-WST	Water Sprinkler Tap
Rs-WSB	Water Sprinkler Bar (Including Clips)
Rs-WBC	Water Sprinkler Bar Clip (Single)
Rs-KB	Kerb Brush
Rs-KBSM	Kerb Brush Sweeper Mount
Rs-KBA	Kerb Brush Arm
Rs-KBMH	Kerb Brush Motor Holder
Rs-KBMP	Kerb Brush Mounting Plate
Rs-KBHHS	Kerb Brush Hydraulic Hose Set
Rs-KBHT	Kerb Brush Hydraulic Tap
Rs-KBHM	Kerb Brush Hydraulic Motor
Rs-HHS	Hydraulic Hose Set
Rs-HV	Hydraulic Valve
Rs-HR	Hydraulic Ram
Rs-HRSK	Hydraulic Ram Seal Kit
Rs-HRC	Hydraulic Ram Cover
Rs-HM	Hydraulic Motor
Rs-HMDB	Hydraulic Motor Drive Block
Rs-TP	Tine Pocket
Rs-TL	Tine Lock
Rs-HMC	Hydraulic Motor Cover
Rs-BAS	Bristle Adjustment Spanner
Rs-RG	Rubber Guard
Rs-CB	Collector Bucket
Rs-BSA	Bristle Swinging Arm
Rs-S	Shell

Information

Terms and Conditions

Quotations and Price

The price quoted excludes VAT (unless otherwise stated). VAT will be charged at the rate applying at the time of delivery and / or performance of the service.

No quotation by us shall constitute an offer by us and all quotations are subject to withdrawal without notice. Quotations may be given orally and in writing.

Quotations lapse 30 days after the date of quotations (unless otherwise stated).

The price quoted excludes delivery, delivery pallets, crates, and other packaging materials unless otherwise stated in writing at the time of your order. There will be no reduction in the price if you collect the goods.

Unless otherwise stated, the price quoted is an illustrative estimate only. At any time before actual delivery of any part of the goods or performance of the service we may adjust the price to reflect any increase in our costs of supplying the goods and / or other services. We will endeavour to agree any such.

Other than as imposed by law, rates of tax and duties on the goods and / or services will be those applying at the time of delivery and / or performance.

Delivery

All delivery times quoted are estimates only. Eastern Attachments accepts no liability for any delay in the delivery or any consequential loss.

Title

Until you pay the contract price in full for goods: all goods supplied by us remain our property; you must store them so that they are clearly identifiable as our property and in or on premises to which you are able to grant us access. You must insure them and keep them insured for the full amount due (against the risks for which a prudent owner would insure them) and hold the policy on trust for us; You may use those goods and sell them in the ordinary course of your business and until payment is made in full, and all proceeds of such sale is to be held on trust for us.

Warranties

Our products are warranted for a period of 12 months from the date of purchase. The warranty does not apply to wear parts. Any work carried out on our products while under warranty must be done with agreement from Eastern Attachments. Claims made for work carried out without our authorisation will be rejected. Eastern Attachments may require the product back for warranty work at our own discretion, transport charges will be the responsibility of the customer.

Ordering

If we prepare the goods in accordance with your specifications or instructions, you must ensure that the specifications or instructions are in writing and are accurate. You must ensure that goods prepared in accordance with those specifications or instructions will be fit for the purpose for which you intend to use them. We accept no liability for any claim whatsoever relating to fitness for purpose for goods which have been prepared in accordance with your specifications or instructions other than that they would not have been so prepared.

Goods are normally sold by the number of items ('quantity') or weight (weighted or calculated). When sold by weight, which includes pallets and any packaging, we are not liable for any quantity variation.

Return of Goods

We will accept the return of goods from you only: by prior arrangement (confirmed in writing by us); on payment of an agreed handling charge (unless the goods were defective when delivered); and in all cases, where the goods are as fit for sale on their return as they were on delivery.

Cancellation

If the order is cancelled (for any reason) you are then to pay us for all stock (finished or unfinished that we may then hold (or to which we are committed for the order).

We may suspend or cancel the order, by written notice if: you fail to pay us any money when due (under the order or otherwise); you become insolvent; you fail to honour your obligations under these Conditions. You may not cancel the order unless we agree in writing.

A full copy of our terms & conditions are available from our sales office.

Eastern Attachments Limited
Maurice Gaymer Road
Attleborough
Norfolk
NR17 2QZ
United Kingdom

Tel: +44 (0) 1953 450350
Fax: +44 (0) 1953 450351

Web: www.easternattachments.co.uk
Email: sales@easternattachments.co.uk

