

STH625E



SANY

Quality Changes the World

MORE FEATURES, MORE POSSIBILITIES

PERFORMANCE AND EFFICIENCY
ON THE HIGHEST LEVEL

Compact, efficient, high-powered and fully electrical telehandler. The STH625E delivers less noise, less vibration and less pollution. Compact dimension, is perfect for working indoors or in other enclosed spaces urban or construction.

FULL ELECTRIC COMPACT TELEHANDLER STH625E

Operating mass
5,100 kg
Battery size
34 kWh
Hydraulic power
32 kW
Working hours
8

PROVEN TECHNOLOGY, NEW ENERGY

MAIN FEATURES

Lifting height	6 meters	Battery voltage	347 V / 96 AH	Travelling speed	20 kph	Turning radius	3350 mm
Overall width	1850 mm	Driving power	32 kW	Height over cab	1920 mm	Capacity	2,500 kg

OPERATING COMFORT/CAB

10-inch touchscreen display and encoder navigation
Heater and air conditioning
Radio with Bluetooth and microphone
Adjustable seat with suspension
12 V power socket
Sunblind, roof and front screen
Heated rear screen
Front, roof and rear wiper and washers
Armrest with storage and USB charger
Cup and bottle holders
Fully adjustable steering column
Intuitive keypad functions (all backlit)
EVI Telematics

WORKING LIGHTS

7 x LED Working lights on cab and boom
Full LED road lights
Amber flashing beacon

WORK EQUIPMENT

Standard Sany Fast Fit carriage with 1200 mm forks
Manitou carriage with fork frame (optional)
On board charger
External 3 phase fast charge: optional
Three steering modes: 4WS, 2WS and crab
Fully proportional joystick
Auxiliary hydraulic venting from cab

SAFETY

CE / UKCA-certified
ROPS ISO:3471:2008 and FOPS ISO:3449:2005
Screen and roof guard (optional)
Reversing alarm
Hi-viz seatbelt
Integrated reversing camera and distance sensor
Seat switch and green „ready“ beacon
Load weight monitoring
Load moment Indicator display



Absolute reliability – for peace of mind!

SANY's telehandler comes with 3 years, 3,000 hrs warranty* gives you the assurance that you can fully count on you equipment.

STH265e CATL battery comes with 5 years or 10,000 hrs warranty period.

* With participating partners

CHARGE ANYWHERE WITH ANY POWER SOCKET

SANY PREMIUM PORTABLE CHARGER –
4 SOCKET ADAPTER PLUGS – 230V / 370V AC



Electric technology

SANY's electric telehandler offers significant operational benefits:

- + No service or diesel filters to replace
- + Easy and quick battery charging
- + Low noise and vibration levels
- + Endless applications and use

Energy recovery

Regenerative braking and harnessing boom lowering forces.

SANY's E-POWER energy recovery system captures up to 15% power ensuring the STH625e is efficient and more productive for longer.



PERFORMANCE PARAMETERS

Maximum lift capacity	kg	2500
Lift capacity at maximum height	kg	2000
Lift capacity at maximum reach	kg	800
Lift height	mm	6000
Maximum forward reach	mm	3350
Carriage crowd angle	°	12
Carriage dump angle	°	117
Frame levelling +/-	°	NA
Outside turning radius (4WS)	mm	3350
Auxiliary hydraulic flow	l/min	80
Auxiliary hydraulic pressure	mpa	270
Noise at driving position	lpa	68
Noise to environment	lwa	76

BOOM PARAMETERS

Boom (raise/lower)	sec	9.4/6.7
Boom (extend/retract)	sec	9.6/6

TYRES

Type/size		12-16.5
-----------	--	---------

WORKING POWER INFORMATION

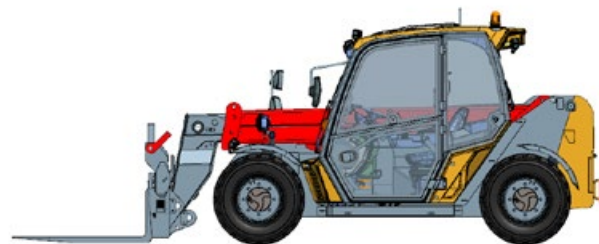
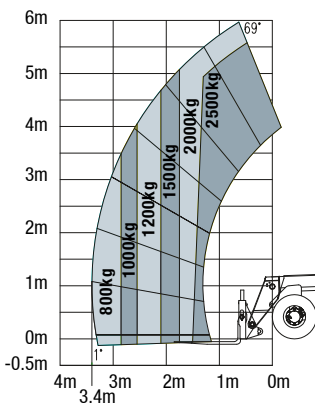
Battery nominal voltage	V	347 / 96AH
Battery technology		LFP
Battery energy	kWh	34
Recharge hours rapid	H	2
Recharge hours standard	H	8
Recharge voltage	V	220/370
Driving motor power	kW	32

SERVICE REFILL CAPACITIES

Hydraulic system	ltr	70
------------------	-----	----

CABIN

Cabin is ROPS & FOPS tested & conforms to ISO 3471/3449.



TRANSMISSION

Transmission type		Electrical
Transmission brand		Dana 301
Transmission motor		Inovance
Driving power	kW	32
Axles		Dana 211
Number of forward gears		2
Number of reverse gears		2
Max. travel speed	kph	20
Parking brake		SAHR
Service brake		Oil-immersed multi-discs

HYDRAULIC SYSTEM

Hydraulic pump type		Gear pump
Hydraulic motor		Inovance
Hydraulic power	kW	32
Hydraulic pump		Cassapa
Hydraulic manifold		Husco
System pressure	bar	270
Hydraulic flow	l/min	80

DIMENSIONS

Length to front of carriage	mm	4000
Overall width	mm	1850
Height over cab without beacon	mm	1920
Height over cab with beacon	mm	2010
Wheelbase	mm	2390
Overall cabin width	mm	960
Ground clearance	mm	250
Turning radius over tyres	mm	3300

POINT LOADS

Machine loaded with models maximum capacity

Load per front tyre	3300 kg
Load per rear tyre	500 kg

Machine unloaded with boom in horizontal travel position

Load per front tyre	1225 kg
Load per rear tyre	1325 kg